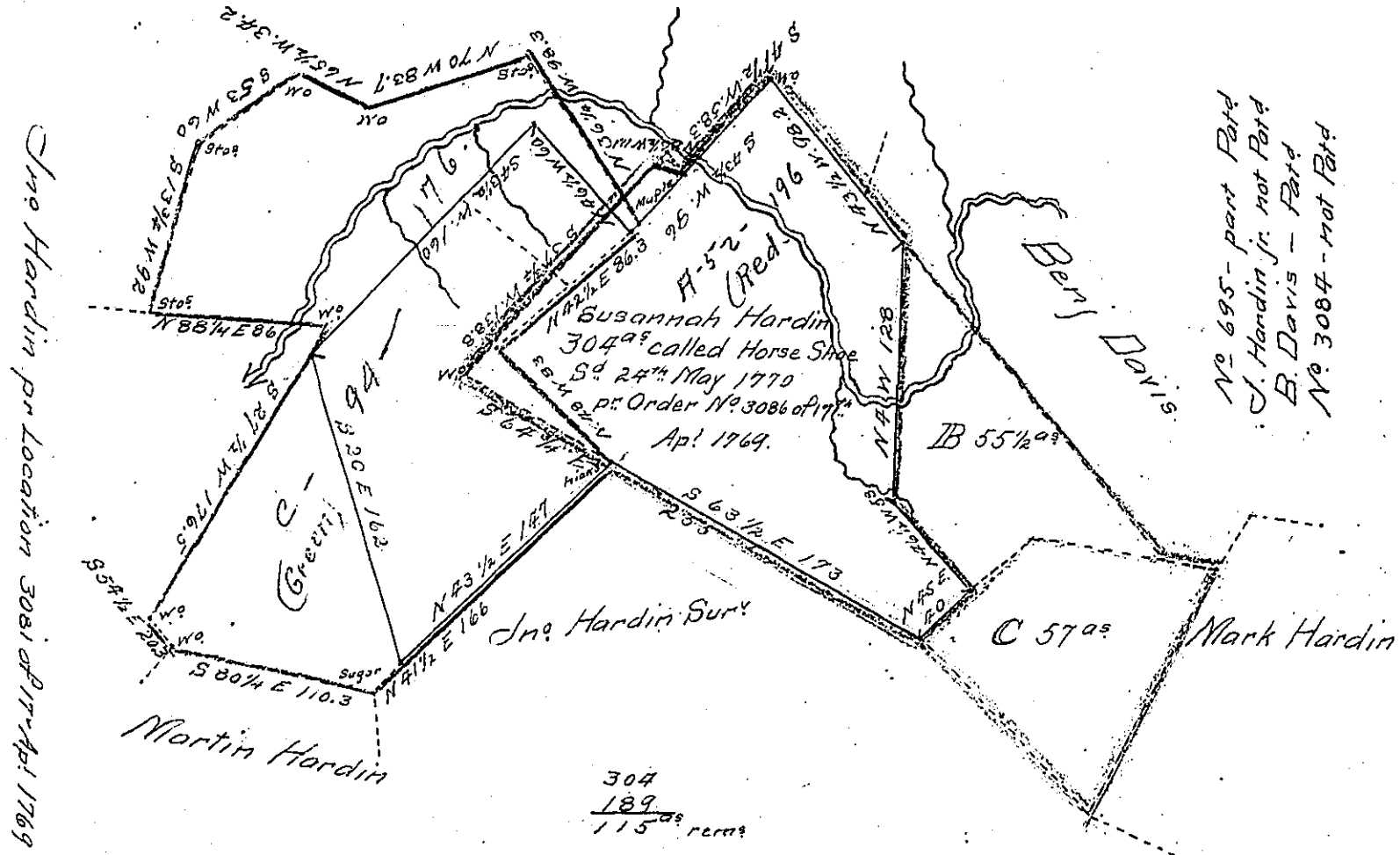


Situate on Georges Creek in Springhill Township Resurveyed 11th 12th March 1829. By F. Lewis D.S.

Note the green lines, John Hardin Jr is unpatented

D^r Saml Sacket



References:

Yellow lines 304^{ac} Surveyed to Susannah Hardin 24th May 1770. pr Order No 3086 of 17th April 1769. pr

Red lines 189^{ac} " John Walker Released by M^cDowell } Moses M^cClean D.S.

Blue lines 301^{ac} " James McDowell 9th June 1787 " " No 695 of 3rd April 1769

Green lines " John Hardin D^r 25 Augt 1785. pr Warrant of 31st May 1785 A. M^cClean

B. Part of Benj^r Davis Surveyed 26 Oct 1785 pr Warrant of 22 April 1785.

C. Mark Hardin (in part) 3rd 18 April 1770 pr Order No 3084 of 17 April 1769. pr Moses M^cClean D.S.

The John Walker Survey has been patented to Ch^s Griffin, who owns most of the Survey and Robert Long the remainder. C is owned by Rich^d Smith 12 or 15^{ac} at \square by And^r Oliphant Esqr. and about 100 at E by George Hardin both live adjoining the premises.

F. Lewis D.S.

IN TESTIMONY that the above is a copy of the original remaining on file in the Department of Internal Affairs of Pennsylvania, made conformably to an Act of Assembly approved the 16th day of February, 1833, I have hereunto set my Hand and caused the Seal of said Department to be affixed at Harrisburg, this Twenty-third day of June 1909.

Henry Hoopes
Secretary of Internal Affairs.